





TEMPLE HEALTH

TO BE  
**A  
LEADER  
IN  
HEALTHCARE**

---



IT TAKES  
**AN  
APPROACH  
LIKE  
NO OTHER**

---



A commitment to  
innovation. A passion for  
improvement. A drive to  
always do more.





---

IT TAKES

# RELENTLESS OPTIMISM



**WE BELIEVE** that when we make lives better, we make healthcare better.





# IT TAKES THE DEDICATION OF A NURSE



**BECAUSE** the energy that keeps us moving forward is the energy we bring to work every day.

TEMPLE HEALTH

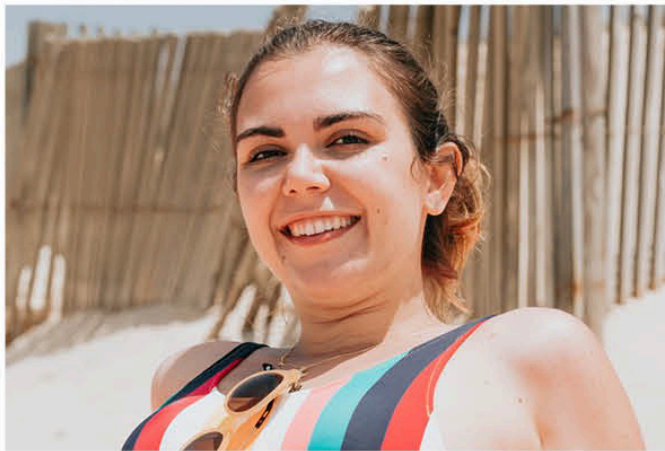


Confidential & Proprietary





IT TAKES YOU



IT TAKES US





IT TAKES

TEMPLE HEALTH



Contents

IS MOBILE BANKING SAFE?

Find out if it's safe to bank before you go on the go.

FINANCIAL FIX

Single mom needs to save for college and retirement.

CHEAP(ER) COLLEGE LOANS

How to find bargain rates.

SECOND ACT

Manager at an art-handling company strikes out on his own.

FIVE THINGS...

...you need to know about venting sports injuries.

I achieved exactly what I set out to, and that makes me proud.

—Wendell E. Johnson, President, Temple Health

ASK THE EXPERT

Should I Convert a Nondeductible IRA Into a Roth?

You can—but it's not always your best approach.

By Walter Updegrave

THE BOZZ

Invest for a Slow Recovery

Look for stocks and bonds that stay strong in a weak economy.

By Paul R. La Monica

50

How to Make the Most of Your Retirement Savings

Don't let your retirement savings go to waste.

By David G. Cook

IT TAKES CARE WITH A BROADER REACH.

More access. More options. More ways to get the care you need from some of the nation's leading experts in pulmonary, cardiac, and bariatric care.

IT TAKES TEMPLE HEALTH





TEMPLEHEALTH.ORG



 Temple Health



Content

IS MOBILE BANKING SAFE?

It's to know before you go on the go.

FINANCIAL FIX

Single mom needs to save college and retirement.

CHEAP(ER) COLLEGE LOANS

How to find bargain rates.

SECOND ACT

Manager at an art-handling gallery strikes out on his own.

FIVE THINGS...

so need to know about venting sports injuries.

Home

47 THINKING ABOUT APPROPRIATE HOME IMPROVEMENT? Here's what you need to pump up the value.

41 STOCK MARKET

Traders to look for signs that emerging markets are up to the stock.

44 X-RAYS

PEOPLES' PLEASURES: A large number of people are up to the stock.

34

ASK THE EXPERT

Should I Convert a Nondeductible IRA Into a Roth?

You can—but it's not always your best approach.

by Walter Updegrave

45

THE BUZZ

Invest for a Slow Recovery

Look for stocks and bonds that stay strong in a weak economy.

by Paul R. La Monica

50

THE BUZZ

How to Buy a Home

Look for signs that the housing market is up to the stock.

by Paul R. La Monica

AUGUST 2019 | CNN MONEY | 5

TO TRANSFORM OUR STANDARDS OF CARE.

IT TAKES INNOVATIVE RESEARCHERS EMBRACING BREAKTHROUGH TECHNOLOGIES.

Temple Health is transforming the way the world thinks about Robotic Surgery by bringing innovative surgical techniques to the operating table. To give new hope to patients around the country, it takes Temple Health.

 [TEMPLEHEALTH.ORG](http://TEMPLEHEALTH.ORG)



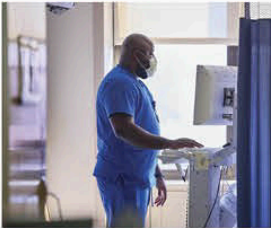








 Temple Health



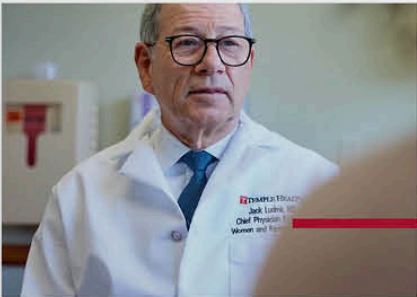
IT TAKES

# ALL OF US

WITH A COMMITMENT LIKE NO OTHER.



IT TAKES TEMPLE HEALTH





TO BRING  
**SPECIALTY CARE  
CLOSER TO HOME**

---

**IT TAKES TEMPLE HEALTH**

**TEMPLE UNIVERSITY HOSPITAL - JEANES CAMPUS**



 **Temple Health**



Wednesday, May 31, 2023  
Today's Paper

The Philadelphia Inquirer

SIGN IN

SUBSCRIBE  
\$1 for 4 months

☰ Q

NEWS SPORTS BETTING BUSINESS OPINION POLITICS ENTERTAINMENT LIFE FOOD HEALTH REAL ESTATE OBITUARIES JOBS

TO LIVE THE  
WAY YOU WANT  
WITH **ALS**



Temple Health

Elementary Schools



In the pre-pandemic 2018-19 school year, 22% of elementary students in the School District of Philadelphia were “chronically absent.” By 2021-22, it grew to **39%.**

Chronic absenteeism is surging in Philly’s early grades, putting thousands more at risk of lasting academic harm

An alarming 46% of all district students are “chronically absent,” meaning they missed more than 10% of their school days, according to



3:13

In New Jersey, 9,400 acres of cranberry farm once owned by a political boss is now a hiking gem

Former GOP political boss J. Garfield DeMarco sold the farm 20 years ago to the nonprofit New Jersey Conservation Foundation for \$11.6 million. Over two decades, the farm has reverted back to nature.

Frank Kummer

THE LATEST

Review: Zach Bryan lights up the Wells Fargo Center in the first of two ‘Burn, Burn, Burn’ shows in South Philly 3 minutes ago

A Levittown woman killed her estranged husband after abuse allegations and a custody dispute, police say 12 minutes ago

Penn opens as underdog against Auburn in NCAA baseball regional 22 minutes ago

The Phillies are chasing plenty this season — especially pitches out of the zone an hour ago

Thursday is the new Friday for Shore-goers as hybrid arrangements keep work-from-beach days alive an hour ago





 Temple Health

# TO LIVE THE WAY YOU WANT WITH ALS

IT TAKES THE GROUNDBREAKING WORK OF PHYSICIAN-RESEARCHERS DEDICATED TO IMPROVING YOUR QUALITY OF LIFE.

At the Temple MDA/ALS Center of Hope, we partner with scientists around the globe to develop life-changing treatments for patients living with neuromuscular diseases like ALS. Because you deserve to live the way you'd like, you deserve treatments that will make that possible.

[LEARN MORE](#)

