





WE ARE  
OUR OWN

~~BARRIERS~~



There is power in being all that stands in your way. The power to turn barriers into motivators. To become unstoppable. It's the power to go from strong player to lasting legacy. From alum to supportive motivator. From some of the first women's teams to three female university presidents in a row. Obstacles do not last long here. This is the fire that Penn fuels within us, to work harder and push through our barriers at every turn. And our coaches, teammates, and fans empower us to take the ambition beyond the game. Beyond the Rose Bowl and the Final Four. Breaking through the barriers of today to become the breakthroughs of tomorrow.



*GAME ON*

*AND ON*

*AND ON*

*AND ON*

**PENN**

**PENN RELAYS**

**CO**

**CORE POWER**

At Penn, we don't just play to win.  
We train, grow, rise, and live for the next. On Franklin Field, into any field. Past the Ivy League titles. Beyond the success. Into the world. The lessons we learn endure. And press on. And on. And on.



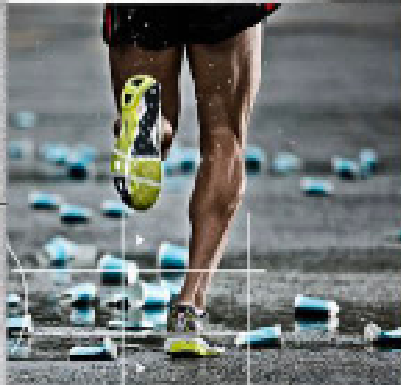
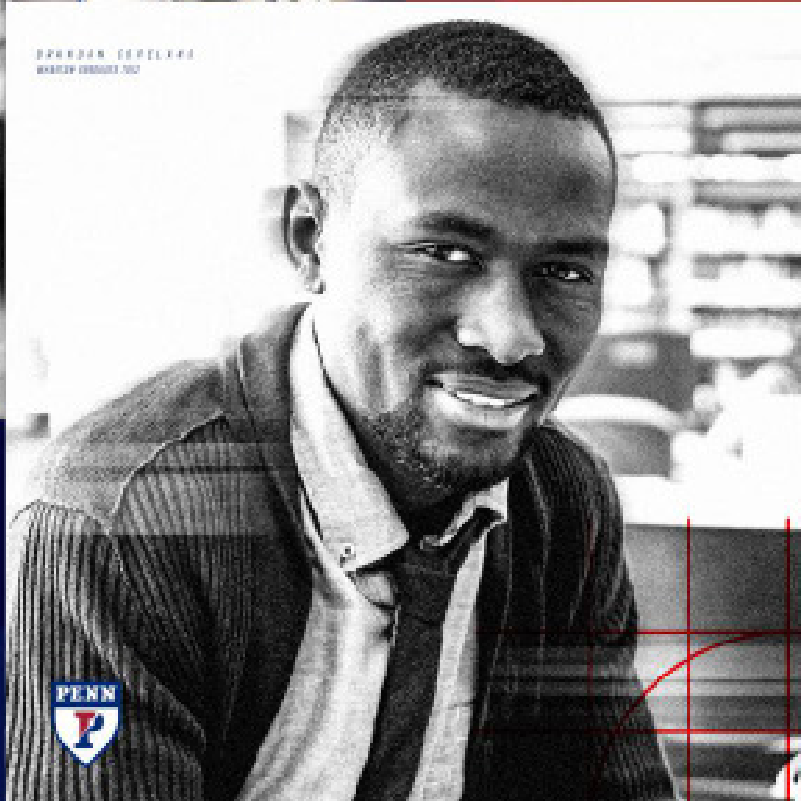
PENN

NO

INSIDE



STRIVE TO  
STRIVE



STRIVE TO  
STRIVE



STRIVE TO  
STRIVE







LET US

M O M E N T U M

I S S O M E T H I N G

W E B U I L D

It takes more than a win to inspire a team. More than making the Sweet 16 or an Ivy League championship. It begins with you, their most crucial supporters. Together with Penn Athletics, you can drive the kind of momentum that builds and builds and drives our athletes to accomplish incredible things in life, like run their own businesses, empower communities, and impact people on a global scale. For them, this momentum starts on the field. And by supporting their long game, you can ensure that it continues for life.

10 / 00



WE'VE

COACHES/STAFF

A LEGACY OF CHAMPIONSHIP

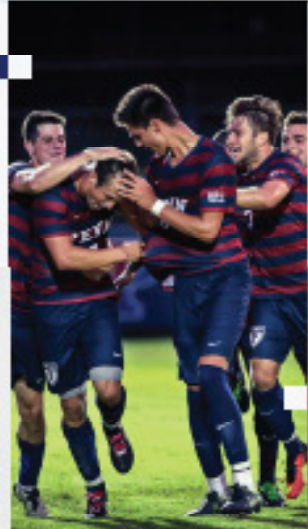
We are dedicated to being let us support it on the court so they are ardently committed to championing that athlete.

WE'VE

EQUIPMENT & FACILITIES

HOME FIELD ADVANTAGE

Penn athletes: it is to know to see amazing things, and we are determined to ensure they remain in top shape for anyone who needs them.

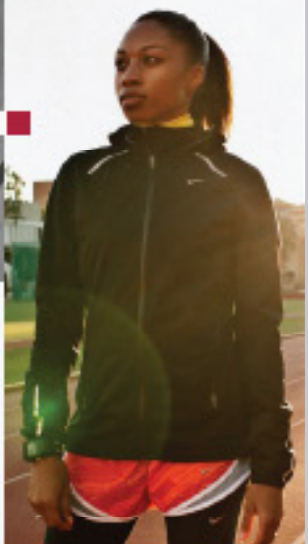


WE'VE

COMMUNITY

OUR ENDURING FAMILY

At Penn Athletics, we are always doing more to engage and foster the advanced education and support that we have our fans and our community.



WE'VE

CHARACTER

CHARACTER FOR LIFE

Penn athletes: from a formidable goal and strong character in the game that leads them to a life of continued success and game play.





No. 03  
COMMUNITY

▶▶▶  
**PROVOKE**  
**TOMORROW**  
▶▶▶

WEST PHILADELPHIA'S  
YOUTH ARE SOME OF OUR  
MOST ARDENT, ENTHUSIASTIC  
SUPPORTERS.

So it's only fitting that we serve as their fans, too. With the Young Quakers Community Athletics (YQCA) program, we host neighborhood elementary kids on our fields and in our facilities to challenge and provoke them to discover what Athletics is all about. And what a little friendly competition can do for their lives.

We teach kids new sports, build integrity, and strengthen study habits. We show that athletics leads to lifelong interests and friendships. And our athletes benefit immensely from the leadership opportunity. Because when these kids let the game into their lives, there's no telling how they'll game onward.



YOUNG QUAKERS  
COMMUNITY ATHLETICS ▶





GO ON

AND ON

#### CAMPAIGN LAUNCH EVENT

To launch the GAME ONWARD campaign, we will be unveiling Philadelphia's first-ever Penn Athletics Mural in University City. We will join the ranks of some of the city's most beloved hometown heroes as we immortalize the history, tradition, and impact of our athletics program. The mural will feature Penn Athletic's greats, such as NFL Hall-of-Famer Chuck Bednarik, two-time Olympic gold medalist Susan Francia, and the recent women's basketball team champions.







A GOAL CAN NOT BE SCORED WITHOUT  
A PASS. A DOUBLE-PLAY TAKES MORE  
THAN A SINGLE PLAYER. A CHAMPION-  
SHIP IS NOT WON ALONE.

+ x +

Just as everyone on the team plays a crucial role, we need all former Penn athletes to lend a hand for our GAME ONWARD Campaign to succeed. \$20, \$100, every little bit of support will help us surpass our goals and aspirations. No gift is too small and all levels of participation are applauded.



▶▶▶  
AMPLIFY YOUR IMPACT AND SET THE  
FUTURE IN MOTION FOR OUR ATHLETES  
▶▶▶



A GOAL CAN NOT BE SCORED WITHOUT A PASS. A DOUBLE-PLAY TAKES MORE THAN A SINGLE PLAYER. A CHAMPIONSHIP IS NOT WON ALONE.

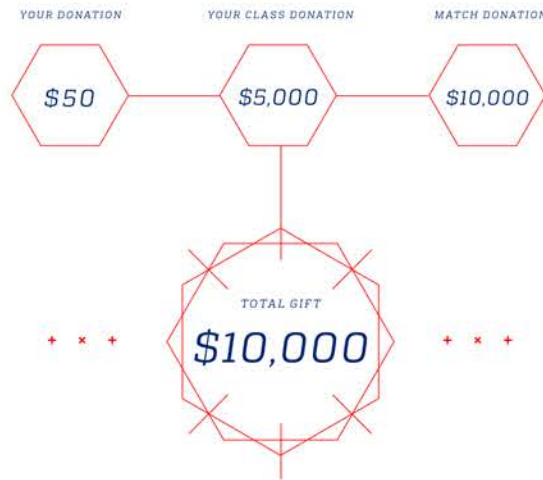
+ x +

Just as everyone on the team plays a crucial role, we need all former Penn athletes to lend a hand for our GAME ONWARD Campaign to succeed. \$20, \$100, every little bit of support will help us surpass our goals and aspirations. No gift is too small and all levels of participation are applauded.



▶▶▶  
AMPLIFY YOUR IMPACT AND SET THE  
FUTURE IN MOTION FOR OUR ATHLETES  
▶▶▶

### DONOR AMPLIFICATION



### DOUBLE (OR TRIPLE) YOUR IMPACT WITH A MATCHED GIFT

+ x +

Thanks to the Class of 1982's recent group pledge to match the first \$100,000-worth of small donations, participating in GAME ONWARD has never been easier. It's become a team sport. You can double your gift with their assistance. Or triple it with additional help from your workplace. Just as there is no end to the game we play at Penn, when we work together, there is no limit to what your gift can do for our student-athletes' future.

VISIT [PENNATHLETICS.COM/GAME-SET-MATCH](https://pennathletics.com/game-set-match) TO GIVE NOW.

# WHAT'S YOUR LONG GAME?



A SOCIAL MEDIA CAMPAIGN ENGAGING  
ALUMNI TO SHARE HOW THEY TOOK THEIR  
GAME FROM THE FIELDS OF UPENN INTO  
THEIR CAREER FIELDS.

