



# Jefferson

Philadelphia University +  
Thomas Jefferson University

---

HOME OF SIDNEY KIMMEL MEDICAL COLLEGE

**evolving**

**demands**

**demand**

**evolving**

We are always a step ahead of an ever-changing world. By combining Philadelphia University and Thomas Jefferson University, two world-class models of professional education, we are reimagining how students learn and establishing the new standard for 21st century discovery and scholarship.

Introducing the new Jefferson. Our approach to thinking and doing creates unexpected collaborations that deepen your expertise and broaden your understanding across disciplines. We deliver an academic experience that brings together entrepreneurs and researchers, fashion designers and architects, or engineers and health professionals with industry partners; bringing an unmatched level of innovation to learning. We build your communication and analytical skills, as well as the global awareness needed to excel in your career. The result? Graduates equipped with the leadership skills that make employers eager to hire them.

Together we are transforming what it means to educate. Together we are redefining what is humanly possible.

✉ [Visit Jefferson.edu](https://www.jefferson.edu) to learn more.



1825

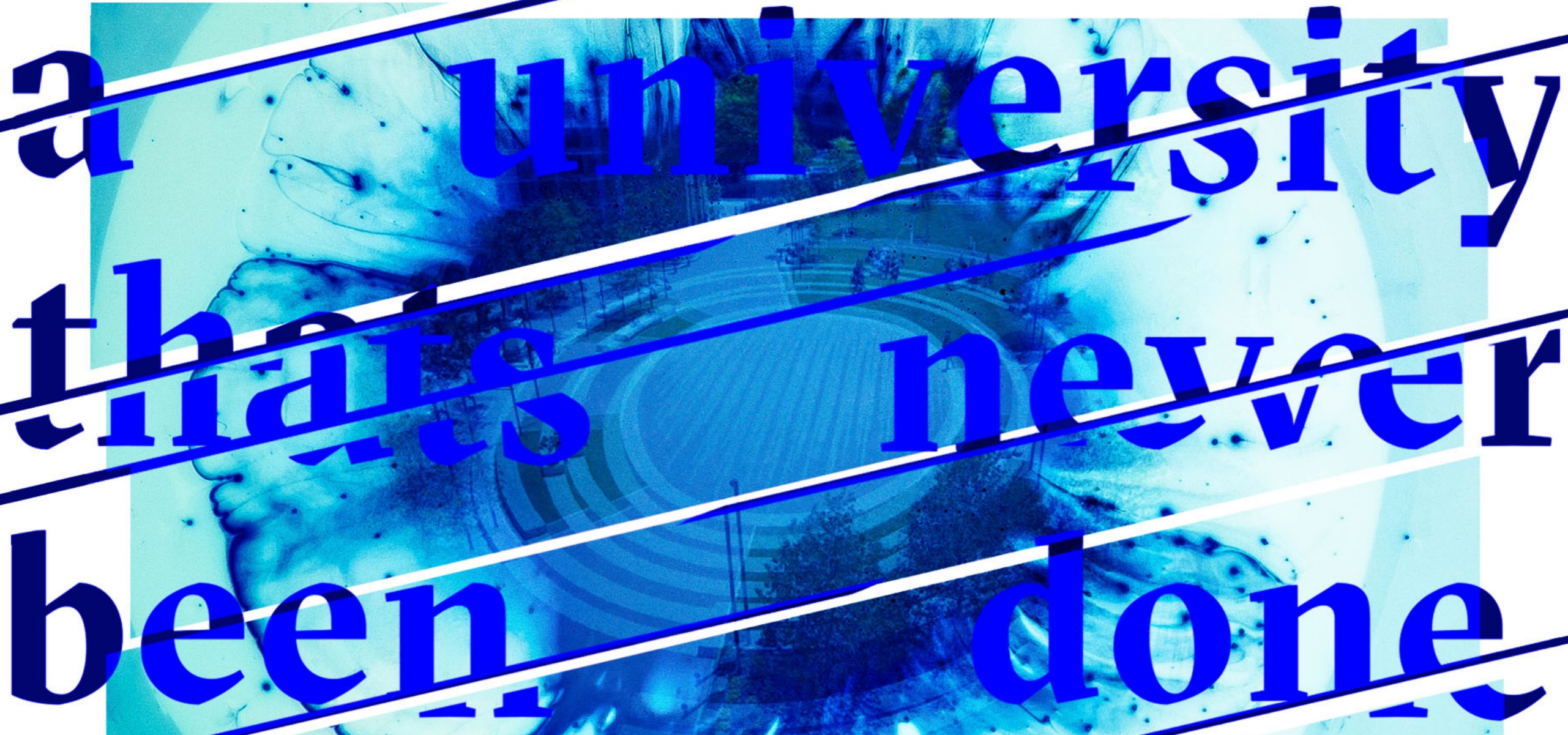
lines  
are

meant

to be  
crossed

Because when lines are crossed they are no longer limits, they are possibilities—completely different paths colliding to form something new.





a university  
that's never  
been done











# contents

<b>4</b>	<b>introduction</b>
<b>12</b>	<b>architecture</b>
<b>20</b>	<b>business</b>
<b>24</b>	<b>design</b>
<b>36</b>	<b>engineering</b>
<b>44</b>	<b>fashion &amp; textiles</b>
<b>52</b>	<b>health</b>
<b>60</b>	<b>medicine</b>
<b>68</b>	<b>science</b>
<b>72</b>	<b>social science</b>
<b>80</b>	<b>student experience</b>
<b>86</b>	<b>apply/visit</b>







An exceptional opportunity to see what great things can be achieved through collaboration.

At Jefferson, we approach every health science program with a research-oriented perspective. With a hands-on style, we give our students the same way we approach everything. Study of nursing and health sciences.

- Health Sciences, B.S./Community and Trauma Counseling, M.S.
- Health Sciences, B.S./Community and Family Therapist, M.S.
- Health Sciences, B.S./Medical Lab Sciences & Biotechnology, M.S.
- Health Sciences, B.S./Nursing (2+2)
- Health Sciences, B.S./Occupational Therapy, M.S.
- Health Sciences, B.S./Physician Assistant, M.S.
- Health Sciences, B.S. - Pre-Medical Imaging & Radiation Sciences (2+2)
- Health Sciences, B.S. - Pre-Nursing
- Health Sciences, B.S. - Pre-Occupational Therapist
- Health Sciences, B.S. - Pre-Pharmacy (2+4)
- Health Sciences, B.S. - Pre-Pharmacy (3+4)
- Health Sciences, B.S. - Pre-Physician Assistant
- Pre-Medical Studies
- Psychology
- Psychology, B.S./Community and Trauma Counseling, M.S.
- Psychology, B.S./Occupational Therapy, M.S.



JEFFERSON

# REDRAW THE LIMITS

You know the world is evolving, and you know technology is reshaping the way we interact with it. You know how to find your own answers, and that the sum of human knowledge is at your fingertips. You know the old ways of seeing are no longer enough, and that it will take an education that evolves your point of view to prepare you for what comes next. That's why Jefferson (Philadelphia University + Thomas Jefferson University) has reimagined the future of higher education—to give you a learning experience unlike any other. One where left brain meets right brain, where entrepreneurs think like artists and designers think like scientists, where new thinking thrives as ideas intersect. Because when students work together and disciplines converge, learning starts to look different. And from this perspective, we can discover a new way forward.

# WRITE YOUR FUTURE

INTRODUCTION

PAGE 4



Because the most rewarding things often take a little work, tear along the perforated edges to get the whole story.

PAGE 5





JEFFERSON

ARCHITECTURE

PAGE 14

If A.I. can create your playlist,

WHY NOT our next city?



# Algorithms shape our lives

from \_\_\_\_\_ how we listen  
 \_\_\_\_\_ to music \_\_\_\_\_ to how  
 we \_\_\_\_\_ get to work.

Now Professor Jeffrey Kansler is testing the analytical capabilities on an even bigger scale. Kansler developed a curriculum centered around the overlap between structural and architectural design and challenged his students to discover the rules, codes and relationships that inform both. Today, Jefferson students are learning to use intelligent design methods like parametric modeling to invent the structures of our interconnected future.

JEFFERSON

ARCHITECTURE

PAGE 15





JEFFSAT1

JEFFERSON

ENGINEERING

PAGE 40

There's  
Thinking  
Outside  
The Box

T H E N  
T H E R E ' S  
T H I N K I N G  
O U T S I D E  
T H E  
A T M O S P H E R E

JEFFERSON

ENGINEERING

PAGE 41

JeffSAT1, a senior engineering design project, is Jefferson Engineering's new satellite prototype that will influence a future model to be sent to space. The cube-shaped, single-purpose satellite prototype will be launched as part of NASA's CubeSat Launch Initiative (CSLI), which provides opportunities for small satellite payloads to fly on upcoming launches. Proposed by engineering senior Nick Reina, JeffSAT1 is designed to measure the earth's magnetic field at low earth orbit, and its flight-ready version is already in the works. At Jefferson, you can find yourself working on groundbreaking projects like JeffSAT1 that redefine the limits of an undergraduate education.



JEFFERSON

STUDENT EXPERIENCE

PAGE 76



Jefferson students win the top prize in the U.S. Department of Defense challenge, redesigning protective chemical-biological suits for military troops



1825: First medical college in the country to open a clinic

# a university of firsts



In 1884, The Philadelphia Textile School opened its doors, becoming the first textile school in America

Head men's basketball coach Herb Magee is enshrined in the Naismith Memorial Basketball Hall of Fame



JEFFERSON

STUDENT EXPERIENCE

PAGE 77



Jefferson students develop the winning design for NASA's new Z-2 series spacesuit



Jefferson performs the first U.S. studies in acupuncture therapy



Jefferson launches the first North American Design Factory, joining the Global Innovation Network in partnership with Aalto University in Finland

# in a city built on them





JEFFERSON

STUDENT EXPERIENCE

PAGE 12

# elevating

With 17 men's and women's NCAA teams and state-of-the-art facilities, Jefferson Rams play as hard as they work. Take your pursuits outside the classroom, where our club and intramural sports programs foster new friendships and nurture fitness and wellness. Back in the legacy of legendary men's basketball coach Herb Magee, the Shot Doctor, The Philadelphia Hall of Fame-inducted coach, one of only four NCAA coaches with more than a thousand wins to his name, has spent his entire adult life at Jefferson, first as a player, then as an assistant coach, then as head coach.

**YOU'LL TAKE YOUR GAME TO THE NEXT LEVEL.**

Discover the Jefferson Rams at [jeffersonrams.com](http://jeffersonrams.com)



# game

# OUR

Jefferson has won the NCAA President's Award for seven straight years.

#### MEN'S TEAMS

- Baseball
- Basketball
- Cross Country
- Golf
- Soccer
- Tennis
- Track

#### WOMEN'S TEAMS

- Basketball
- Cross Country
- Golf
- Lacrosse
- Rowing
- Soccer
- Softball
- Tennis
- Track
- Volleyball

JEFFERSON

STUDENT EXPERIENCE

PAGE 13



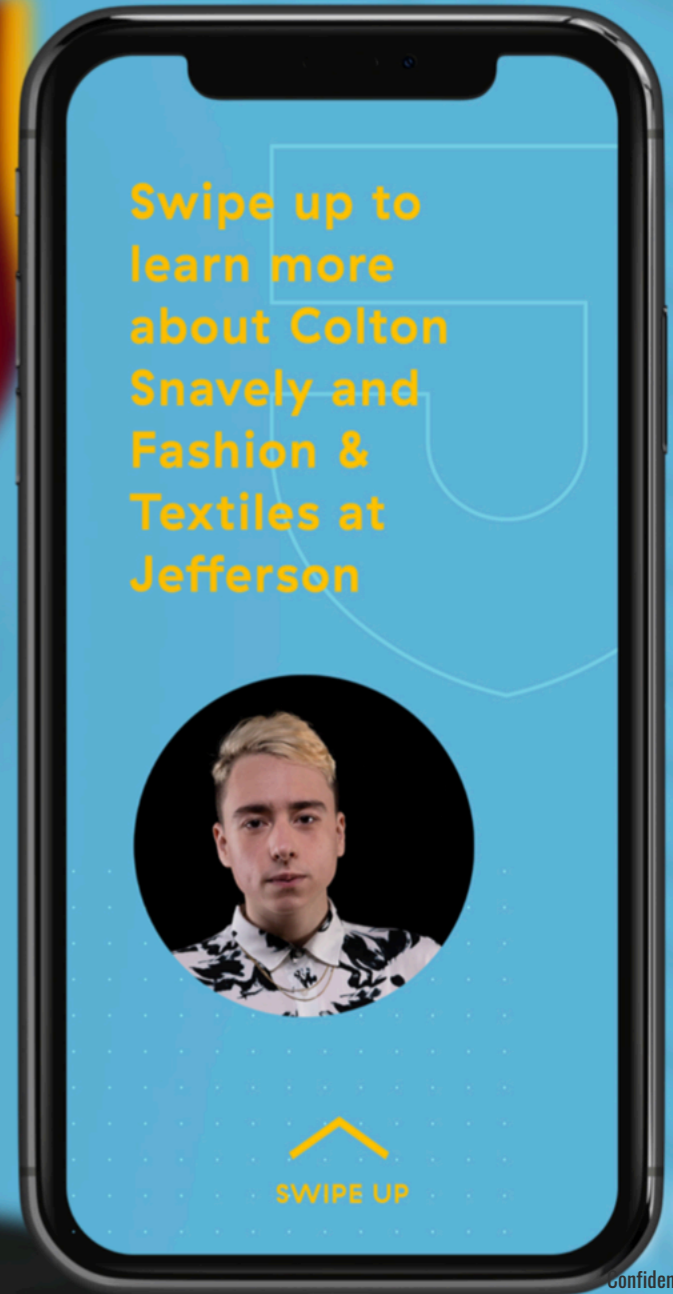
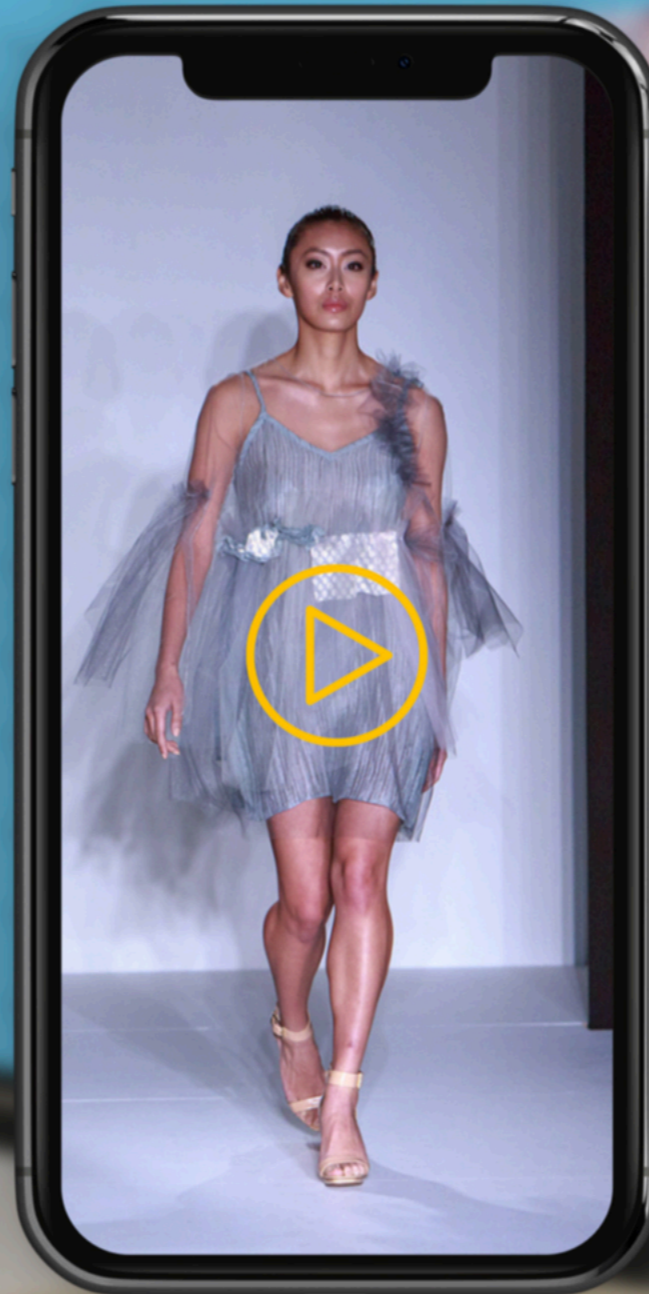






**MAKE WHAT'S NEXT**  
SCAN WITH YOUR PHONE'S CAMERA  
TO SEE WHAT'S POSSIBLE









**Built from  
two legacies.  
Joined by  
one vision.**

redefining  
humanly possible  
[jefferson.edu/possible](http://jefferson.edu/possible)



**Redraw the  
limits. Rewrite  
your future.**

redefining  
humanly possible  
[jefferson.edu/possible](http://jefferson.edu/possible)



**The future happens  
where ideas intersect.**

redefining  
humanly possible  
[jefferson.edu/possible](http://jefferson.edu/possible)











A university  
of firsts in  
a city built  
on them.

[jefferson.edu/possible](http://jefferson.edu/possible)





EMERGENCY  
BRAKE VALVE

CAUTION!  
DOOR CLOSES  
AUTOMATICALLY  
WHEN TRAIN  
IS IN MOTION

**SUPPERY RAIL**  
WARNING

When the train is in motion, the doors will close automatically. If you are standing in the aisle, please hold onto the handrails or overhead straps. Do not lean against the doors or windows. Do not use mobile phones or other electronic devices while the train is in motion. For more information, please visit [www.septa.org](http://www.septa.org).

**PLEASE**

BE SURE YOU HAVE ALL OF YOUR BELONGINGS BEFORE EXITING THE TRAIN

PLEASE DO NOT DRINK OR EAT ON THE TRAIN



*A new university  
with 328 years  
of experience.*

redefining  
humanly possible  
[jefferson.edu/possible](http://jefferson.edu/possible)

**Jefferson**  
Philadelphia University +  
Thomas Jefferson University  
HOME OF SIDNEY KIMMEL MEDICAL COLLEGE







